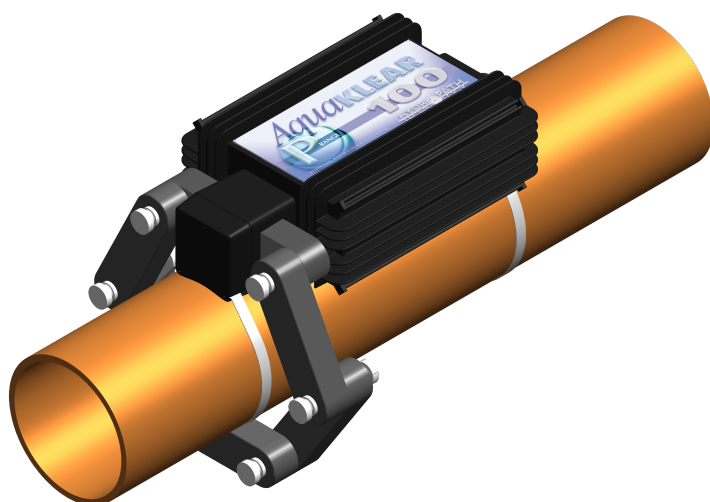


A Range of Quality Products now Exclusively available to you in West Africa

Exclusive Distributors:



Business Group registered in Mali, Niger and Senegal have joined forces and experience to bring you unique products.



HydroFlow

Water Treatment Systems

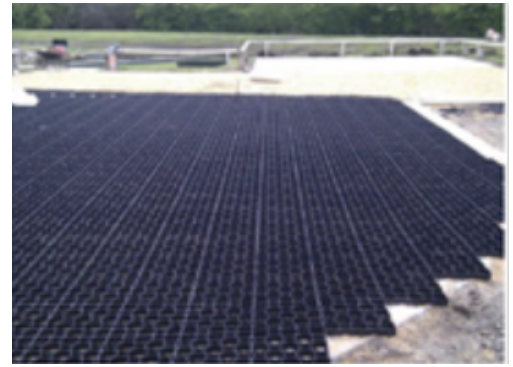


Treats: bacteria, algae, corrosion and lime. Easy to install, no maintenance

Hydroflow uses the Hydropath technology. Developed in the UK over 20 years ago and distributed around the world.

The system Hydroflow necessitates no chemicals, no maintenance and no alterations to your existing plumbers and can be installed in a domestic and industrial applications. All it needs is a power source (can be solar if grid not available) and its proven to treat water from bacteria, algae, corrosion and lime and keep your equipment clean.

For more details contact us: +223 72 22 00 71 or email



Paddock Slabs

light, easy to Install and long lasting



Hanpave is a high performance grid made from recycled polypropylene. Designed for car-parking, Hanpave can be filled with earth or gravel. The structure allows rainwater to pass through at a controlled rate and is SUD (Sustainable Urban Drainage) regulations compliant.

- Dimensions: 33.3 x 33.3 x 4 cm
- Rigid load bearing grid system
- Low weight
- High load capacity: 250 to 350 tons per m²
- Flexible elements available as identification, e.g. for parking lots
- Easy to install

Paddock slabs are intended for use with animals. As well as paddocks, they can also be used for riding arenas, exercise runs and feeding areas. Resistant to frost and UV, the clever connection system locks each slab in place to make sure you'll always be on firm ground.

- Dimensions: 50 x 40 x 4 cm
- Quick installation due to light weight
- Low coverage – fast water drainage
- Suitable for load class SLW 60 according to DIN 1072

Sewage and Wastewater Treatment Plants

ISO 9001:
2008 Cert.



- A Two covers Ø 400 mm**
- access side (IN) for monitoring and drainage
 - access side (OUT) for monitoring and cleaning of the "Performance" pre-filter
 - Height of covers is adjustable to the finished ground level by screwing of REHC risers



For description, installation, operation, maintenance and guarantees of Main Pre-treatment Units, Secondary treatment Units and Accessories, see our user manual A24.



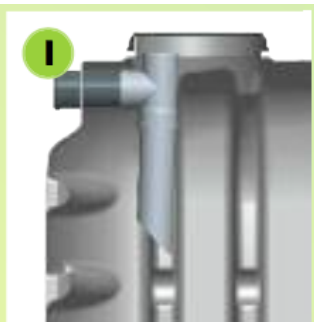
- Horizontal and vertical reinforcement ribs:**
- reduce the volume of excavation debris
 - reduce the volume of infill
 - increase resistance
 - reduce excavation size
 - shallow burial depth



- Pre-filter clogging indicator side OUT, SS. deflector and "Performance" filtering material**
- Trapping a maximum of Suspended Solids (SS)
 - reducing the BOD5 (Biochemical Oxygen Demand over 5 days)
 - Integral vents of 6 X Ø 35 mm
 - Integrated detachable baffle.



- D**
- **Pit test** in wet soil with 0.60m above the water table (according to the starting conditions of the Double wall skin range with the "Plantco" fixation in user manual A24)
 - **Hydraulic efficacy** ≤ 1.2g of micro-beads tested on the 2000l version



- Inlet baffle (IN):**
- Influx of household wastewater
 - Access for unclogging
 - Integral decompression vents Ø 110 mm
 - Device removable



- **Lifting ring on top**

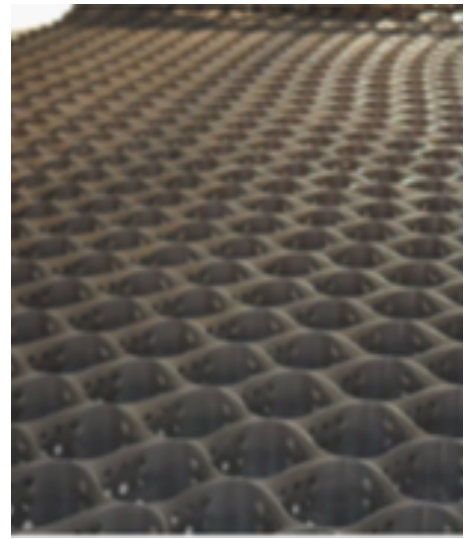
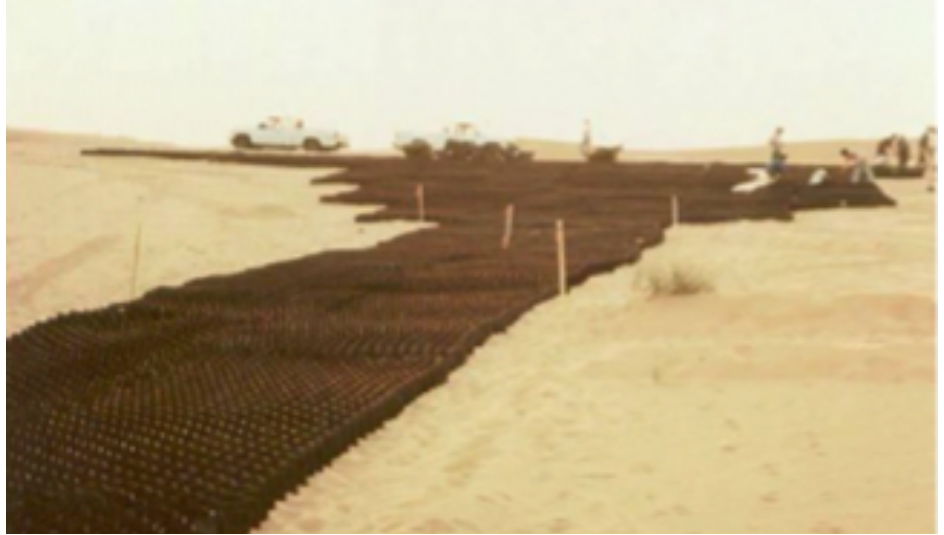


- **Anchor ring for improved fixation when required**



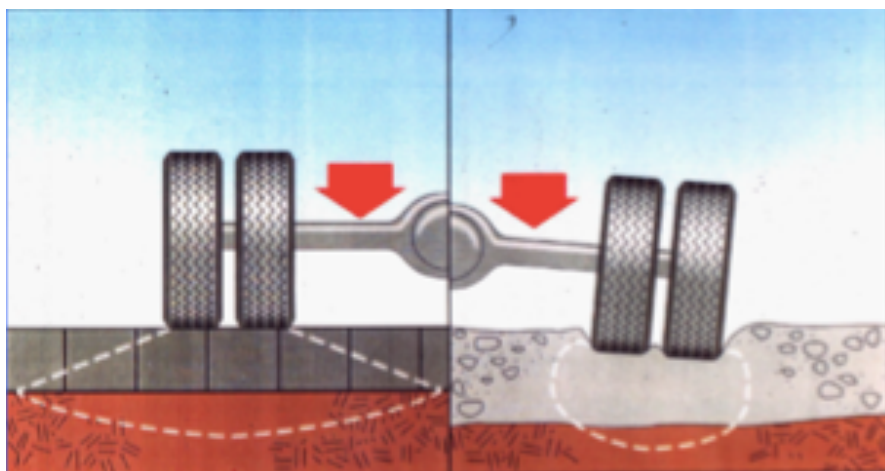
**100%
RECYCLABLE**

Anaerobic pre-treatment septic tanks (Epurbloc), with or without per-filter up to the biological station (Actibloc) servicing up to a population of 300. Tested to reduce pollution by 97%!



Geo-Cellular

In the desert or in the jungle, the Geo-cellular is the solution



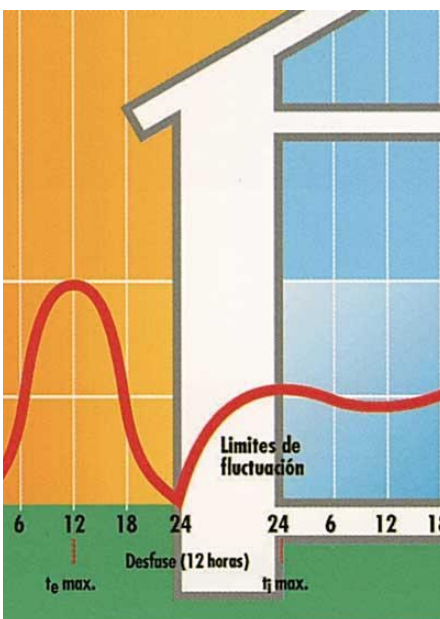
Geo-cellular is a system tridimensional in honeycomb shape, light, flexible yet very strong, made of industrial strips of polyethylene with ultrasonic joints, the Geo-cellular can be laid fast. It's a geo-synthetic products, very efficient to

resolve drainage problems, terrains stabilisation and helps controlling erosion. the Geo-cellular can be used virtually anywhere.



Cellular Concrete

Low-cost and Energy Efficient



Products Characteristics:

Fire resistant, Massif and in-deformable, excellent against micro-organisms, light, durable and environmentally friendly, Perfect insulation in all climates, soundproof, Integrates extremely well with traditional systems, Can be handled easily, Shapes can be personalised, Construction is fast, Adaptable to any construction project amongst many other advantages. Cellular Concrete is the construction Material for Africa.